

# RALLYE international du VALAIS

23 - 25 octobre 2008



# IRC

Intercontinental  
Rally Challenge

LeMatin



SUBARU

Avec le soutien de la

Loterie Romande



VERBIER  
WILDBIRCHES

CAFFÈ  
CHICCO D'ORO

sga  
Affichage

TAGHeuer



# Rallye du Valais 2008

## Strecken- und Zeitplan



**Donnerstag, 23. Oktober 2008**

Administrative Abnahme, Hotel du Parc, Martigny	07:00 – 10:30
Technische Abnahme, Martigny CERM	
* Fakultative Abnahme bereits am Mittwoch, 17:20 Uhr *	
Shakedown, Martigny	08:00 – 12:00
START Martigny CERM	14:00
ASS. Martigny CERM (20')	14:00
ES 1 CRANS MONTANA	11.61 km 15:23
ES 2 ANZÈRE	12.22 km 16:06
ES 3 SUPER-ES SION CASERNES	7.20 km 16:59
REGR. Sion Casernes (30')	17:09
ASS. Martigny CERM (45')	18:15
ZIEL Martigny CERM	19:00

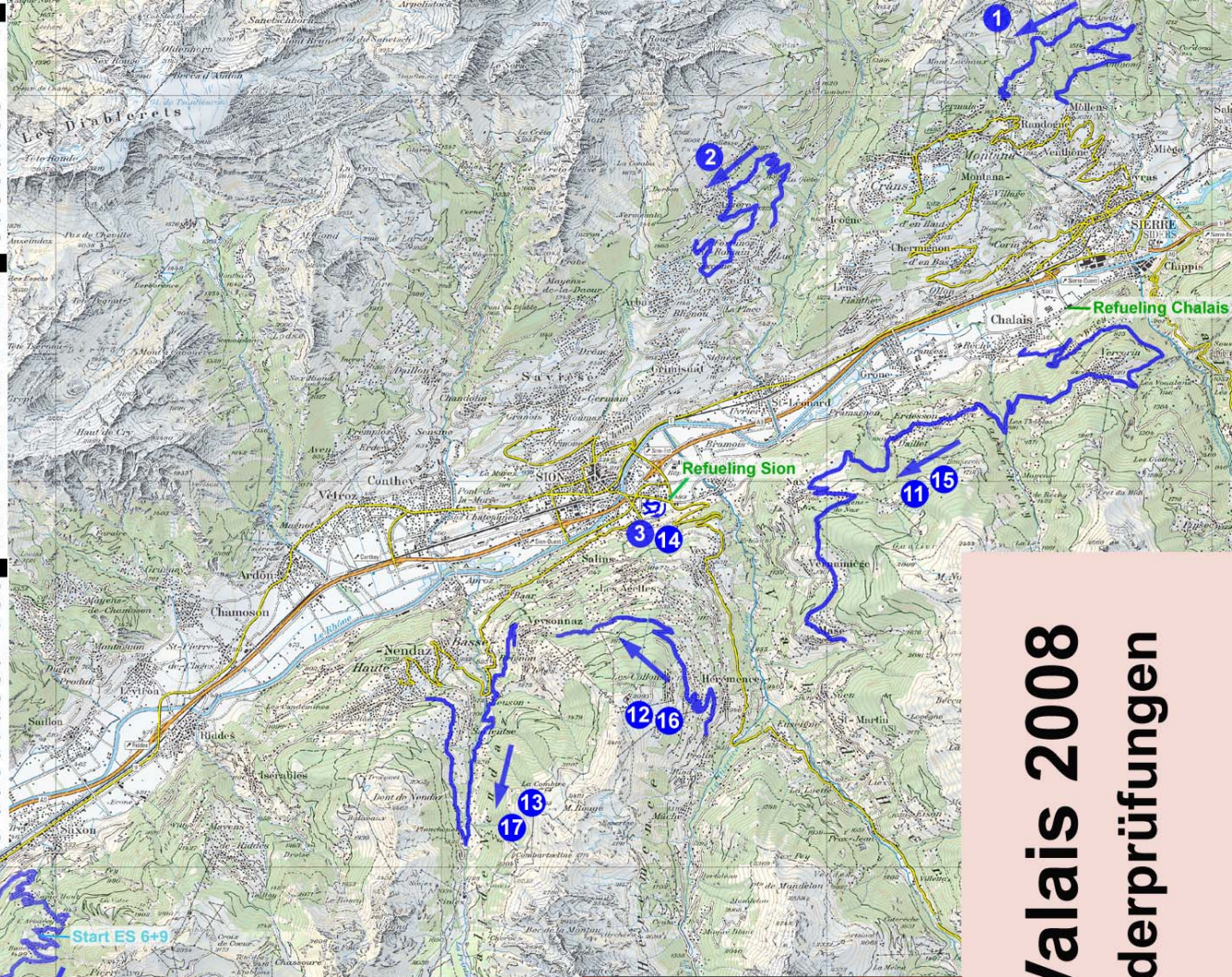
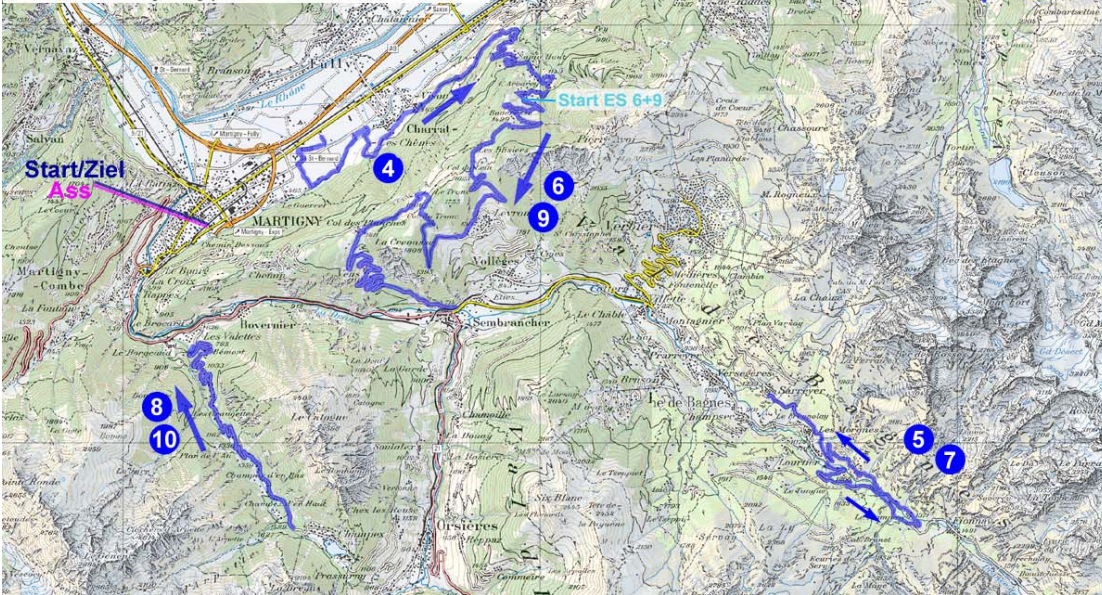
**Freitag, 24. Oktober 2008**

START Martigny CERM	09:00
ASS. Martigny CERM (20')	09:00
ES 4 LES COLS	40.00 km 09:43
ES 5 BAGNES	11.15 km 10:51
REGR. Martigny CERM (30')	11:46
ASS. Martigny CERM (20')	12:16
ES 6 COL DES PLANCHES	22.88 km 13:19
ES 7 BAGNES	11.15 km 14:07
ES 8 CHAMPEX	9.91 km 15:10
REGR. Martigny CERM (25')	15:35
ASS. Martigny CERM (20')	16:00
ES 9 COL DES PLANCHES	22.88 km 17:03
ES 10 CHAMPEX	9.91 km 17:56
ASS. Martigny CERM (45')	18:25
ZIEL Martigny CERM	19:10

**Samstag, 25. Oktober 2008**

START Martigny CERM	08:00
ASS. Martigny CERM (20')	08:00
ES 11 VERCORIN	27.87 km 09:18
ES 12 VEYSONNAZ	9.90 km 10:21
ES 13 NENDAZ	12.30 km 10:44
REGR. Martigny CERM (20')	11:49
ASS. Martigny CERM (20')	12:09
ES 14 SUPER-ES SION CASERNES	7.20 km 13:15
ES 15 VERCORIN	27.87 km 13:53
ES 16 VEYSONNAZ	9.90 km 14:56
ES 17 NENDAZ	12.30 km 15:19
ASS. Martigny CERM (20')	16:25
ZIEL Martigny CERM	16:45

Preisverteilung, Martigny CERM 20:30



**RALLYE VALAIS**  
International du

**IRC**  
Intercontinental Rally Challenge

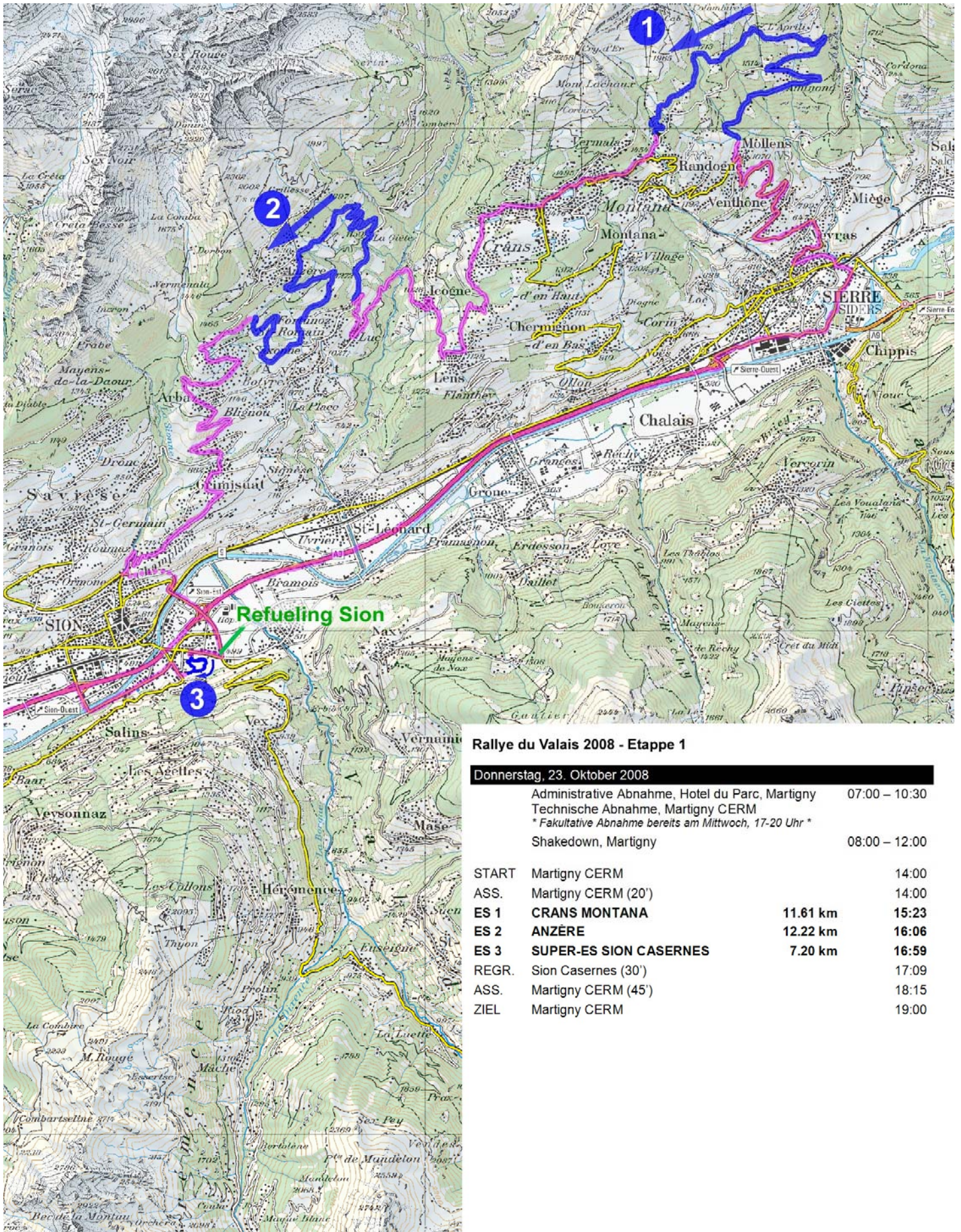
23 - 25 octobre 2008

Le Matin  
SUBARU  
VERBIER  
CHICCO DORO  
S&G  
TAG Heuer

# Rallye du Valais 2008

## Übersicht Sonderprüfungen



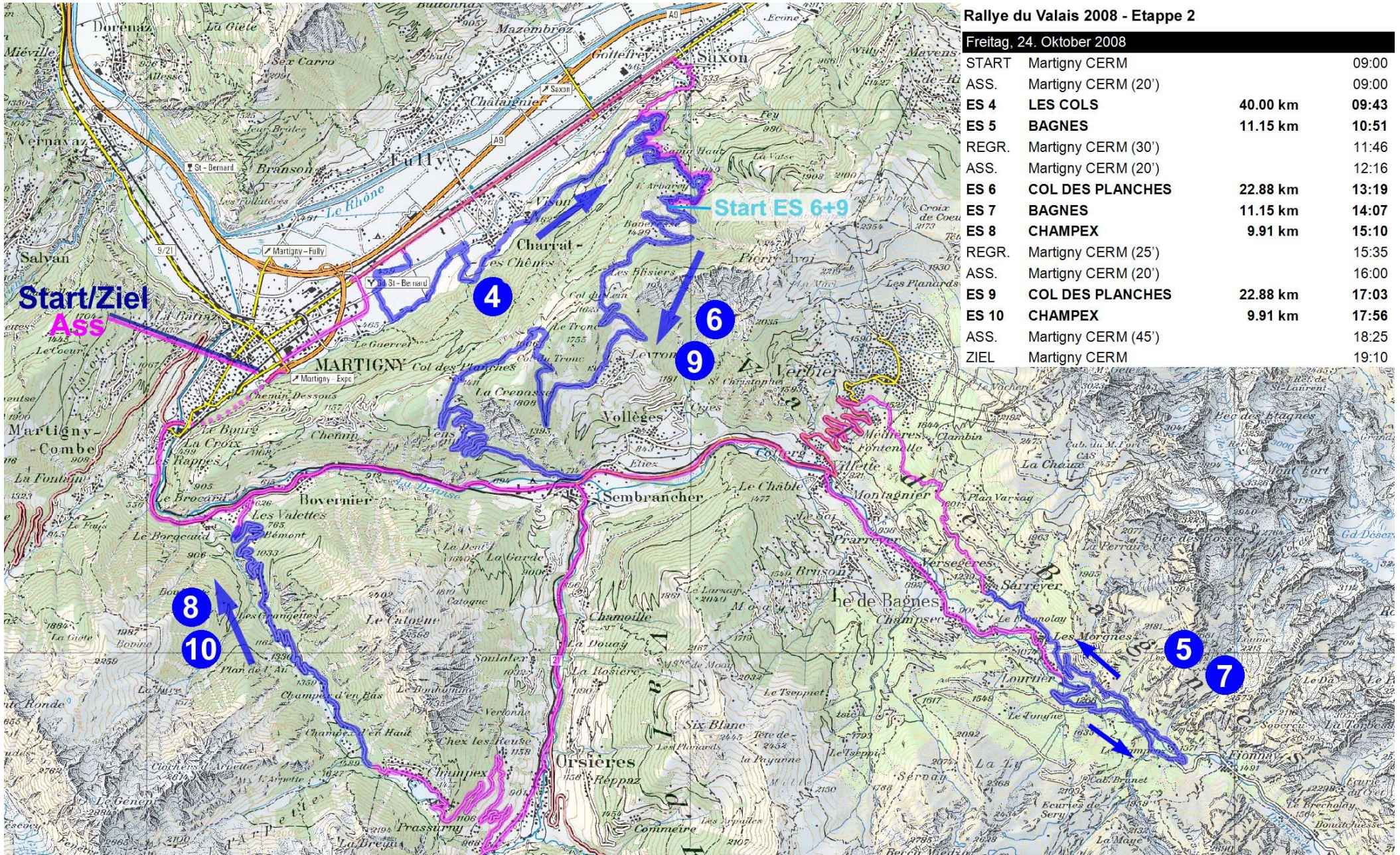


**Rallye du Valais 2008 - Etape 1**

Donnerstag, 23. Oktober 2008

Administrative Abnahme, Hotel du Parc, Martigny	07:00 – 10:30
Technische Abnahme, Martigny CERM	
* Fakultative Abnahme bereits am Mittwoch, 17-20 Uhr *	
Shakedown, Martigny	08:00 – 12:00
<b>START</b>	Martigny CERM 14:00
<b>ASS.</b>	Martigny CERM (20') 14:00
<b>ES 1</b>	<b>CRANS MONTANA</b> 11.61 km 15:23
<b>ES 2</b>	<b>ANZÈRE</b> 12.22 km 16:06
<b>ES 3</b>	<b>SUPER-ES SION CASERNES</b> 7.20 km 16:59
<b>REGR.</b>	Sion Casernes (30') 17:09
<b>ASS.</b>	Martigny CERM (45') 18:15
<b>ZIEL</b>	Martigny CERM 19:00



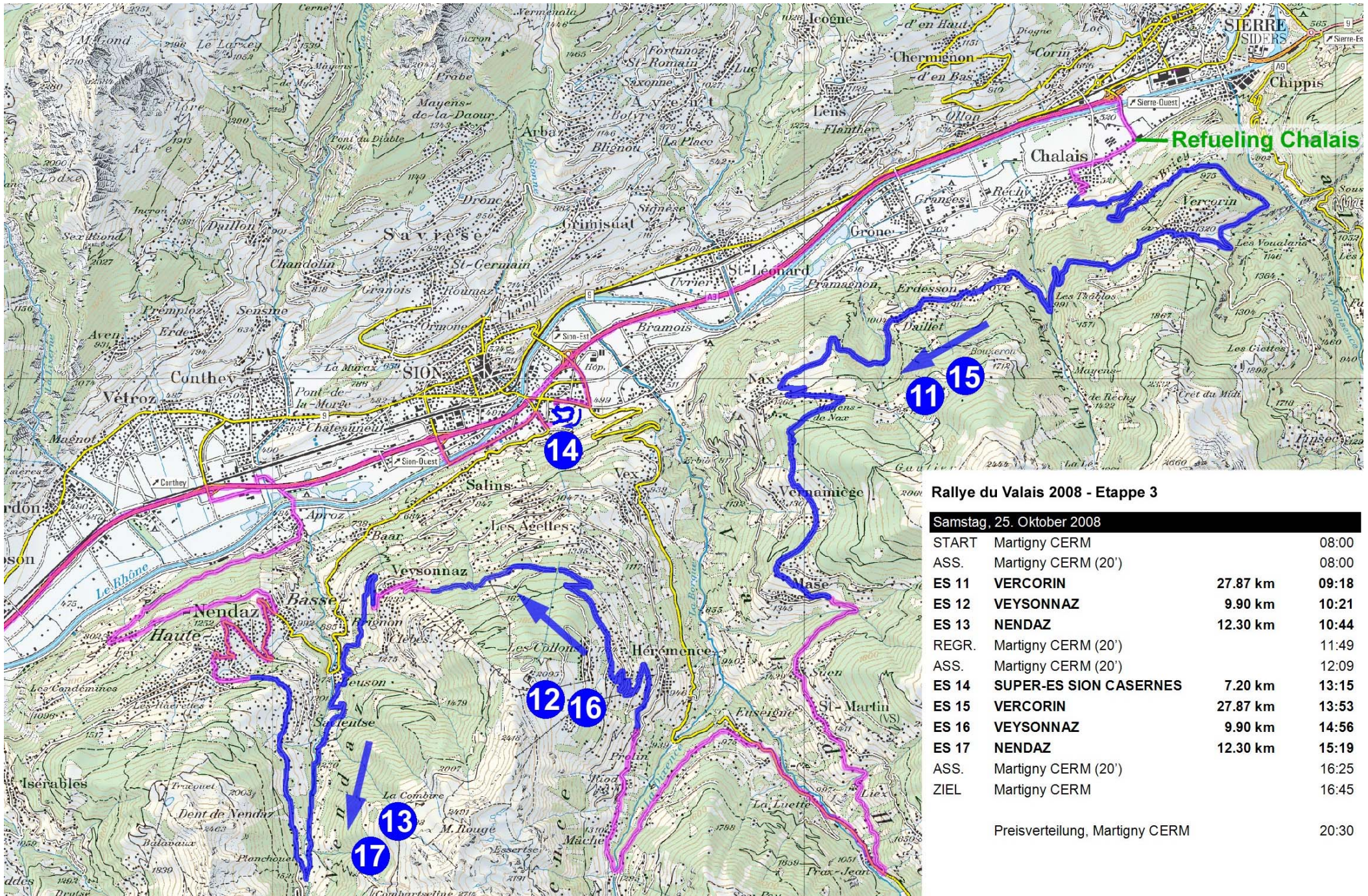


Rallye du Valais 2008 - Etape 2

Freitag, 24. Oktober 2008

START	Martigny CERM		09:00
ASS.	Martigny CERM (20')		09:00
ES 4	LES COLS	40.00 km	09:43
ES 5	BAGNES	11.15 km	10:51
REGR.	Martigny CERM (30')		11:46
ASS.	Martigny CERM (20')		12:16
ES 6	COL DES PLANCHES	22.88 km	13:19
ES 7	BAGNES	11.15 km	14:07
ES 8	CHAMPEX	9.91 km	15:10
REGR.	Martigny CERM (25')		15:35
ASS.	Martigny CERM (20')		16:00
ES 9	COL DES PLANCHES	22.88 km	17:03
ES 10	CHAMPEX	9.91 km	17:56
ASS.	Martigny CERM (45')		18:25
ZIEL	Martigny CERM		19:10





**Rallye du Valais 2008 - Etape 3**

Samstag, 25. Oktober 2008

START	Martigny CERM		08:00
ASS.	Martigny CERM (20')		08:00
ES 11	VERCORIN	27.87 km	09:18
ES 12	VEYSONNAZ	9.90 km	10:21
ES 13	NENDAZ	12.30 km	10:44
REGR.	Martigny CERM (20')		11:49
ASS.	Martigny CERM (20')		12:09
ES 14	SUPER-ES SION CASERNES	7.20 km	13:15
ES 15	VERCORIN	27.87 km	13:53
ES 16	VEYSONNAZ	9.90 km	14:56
ES 17	NENDAZ	12.30 km	15:19
ASS.	Martigny CERM (20')		16:25
ZIEL	Martigny CERM		16:45

Preisverteilung, Martigny CERM 20:30



TC SS	Location	SS name	SS dist	Liaison dist.	Total dist.	Target time	First car due
<b>SECTION 1</b>							
0	Martigny Start Day 1 / Service A In						14:00
	Service A (CERM)					00:20	
0A	Service A Exit						14:20
	Km to next refuel	<b>RZ 1 (CERM)</b>	<b>31.03</b>	<b>89.77</b>	<b>120.80</b>		
1	Mollens			56.76	56.76	01:00	15:20
<i>SS 1</i>	<i>Mollens-Les Violettes</i>	<i>Crans-Montana</i>	<i>11.61</i>				<i>15:23</i>
2	Luc			14.71	26.32	00:40	16:03
<i>SS 2</i>	<i>Luc-La Tzouma</i>	<i>Anzère</i>	<i>12.22</i>				<i>16:06</i>
3	Sion			17.39	29.61	00:50	16:56
<i>SS 3</i>	<i>Sion Casernes 1</i>	<i>Les Casernes 1</i>	<i>7.20</i>				<i>16:59</i>
3A	Sion Casernes - Regrouping In			0.13	7.33	00:10	17:09
	Regrouping (Casernes)					00:30	
3B	Regrouping Exit						17:39
	Km for next refuel	<b>RZ 2 (AGIP Sion)</b>		<b>30.97</b>	<b>30.97</b>		
3C	Service B In			31.75	31.75	00:36	18:15
	Service B (CERM)		<b>31.03</b>	<b>120.74</b>	<b>151.77</b>	00:45	
3D	Service B Exit / Finish Day 1						19:00

**Jour 1 / Day 1: section 1 totals**

**3**

**31.03**

**120.74**

**151.77**

New **Rally.** New **Generation.**

TC SS	Location	SS name	SS dist	Liaison dist.	Total dist.	Target time	First car due
<b>SECTION 2</b>							
3E	Start Day 2 / Service C In						09:00
	Service C (CERM)					00:20	
3F	Service C Exit						09:20
	Km to next refuel	<b>RZ 3 (CERM)</b>	<b>51.15</b>	<b>48.62</b>	<b>99.77</b>		
4	Les Etangs			4.78	4.78	00:20	09:40
<b>SS 4</b>	<b>Les Etangs-Sembrancher</b>	<b>Les Cols</b>	<b>40.00</b>				<b>09:43</b>
5	Lourtier			12.57	52.57	01:05	10:48
<b>SS 5</b>	<b>Lourtier - Sarreyer 1</b>	<b>Bagnes 1</b>	<b>11.15</b>				<b>10:51</b>
5A	Regrouping in			31.27	42.42	00:55	11:46
	Regrouping (CERM)					00:30	
5B	Regrouping Exit / Service D In						12:16
	Service D (CERM)		<b>51.15</b>	48.62	99.77	00:20	
5C	Service D Exit						12:36
	Km to next refuel	<b>RZ 4 (CERM)</b>	<b>43.94</b>	<b>74.49</b>	<b>118.43</b>		
6	La Luy			19.79	19.79	00:40	13:16
<b>SS 6</b>	<b>La Luy-Sembrancher 1</b>	<b>Col des Planches 1</b>	<b>22.88</b>				<b>13:19</b>
7	Lourtier			12.47	35.35	00:45	14:04
<b>SS 7</b>	<b>Lourtier-Sarreyer 2</b>	<b>Bagnes 2</b>	<b>11.15</b>				<b>14:07</b>
8	Champex			34.72	45.87	01:00	15:07
<b>SS 8</b>	<b>Champex-Les Valettes 1</b>	<b>Champex 1</b>	<b>9.91</b>				<b>15:10</b>
8A	Regrouping In			7.51	17.42	00:25	15:35
	Regrouping (CERM)					00:25	
8B	Regrouping Exit / Service E In						16:00
	Service E (CERM)		<b>43.94</b>	74.49	118.43	00:20	
8C	Service E Exit						16:20
<b>SECTION 3</b>							
	Km for next refuel	<b>RZ 5 (CERM)</b>	<b>32.79</b>	<b>44.98</b>	<b>77.77</b>		
9	La Luy			19.79	19.79	00:40	17:00
<b>SS 9</b>	<b>La Luy-Sembrancher 2</b>	<b>Col des Planches 2</b>	<b>22.88</b>				<b>17:03</b>
10	Champex			17.68	40.56	00:50	17:53
<b>SS 10</b>	<b>Champex-Les Valettes 2</b>	<b>Champex 2</b>	<b>9.91</b>				<b>17:56</b>
10A	Service F In			7.51	17.42	00:29	18:25
	Service F (CERM)		<b>32.79</b>	44.98	77.77	00:45	
10B	Service F Exit / Finish Day 2						19:10

<b>Jour 2 / Day 2: section 2 + 3 totals</b>	<b>7</b>	<b>127.88</b>	<b>168.09</b>	<b>295.97</b>
---	----------	---------------	---------------	---------------

New Rally. New Generation.

TC SS	Location	SS name	SS dist	Liaison dist.	Total dist.	Target time	First car due
<b>SECTION 4</b>							
10C	Start Day 3 / Service G In						8:00
Service G (Martigny Cerm)						0:20	
10D	Service G Exit						8:20
	Km to next refuel	<b>RZ 6 (CERM)</b>		<b>44.75</b>	<b>44.75</b>		
	Km to next refuel	<b>RZ 7 (JUBIN Chalais)</b>	<b>50.07</b>	<b>61.77</b>	<b>111.84</b>		
11	Chalais			47.27	47.27	0:55	9:15
<b>SS 11</b>	<b>Chalais-Mase 1</b>	<b>Vercorin 1</b>	<b>27.87</b>				<b>9:18</b>
12	Ayer			18.13	46.00	1:00	10:18
<b>SS 12</b>	<b>Ayer-Veysonnaz 1</b>	<b>Veysonnaz 1</b>	<b>9.90</b>				<b>10:21</b>
13	Veysonnaz			2.01	11.91	0:20	10:41
<b>SS 13</b>	<b>Veysonnaz-Nendaz 1</b>	<b>Nendaz 1</b>	<b>12.30</b>				<b>10:44</b>
13 A	Regrouping In			39.11	51.41	1:05	11:49
	Regrouping (CERM)					0:20	
13 B	Regrouping Exit / Service H In						12:09
Service H (CERM)			<b>50.07</b>	<b>106.52</b>	<b>156.59</b>	0:20	
13C	Service H Exit						12:29
<b>SECTION 5</b>							
	Km for next refuel	<b>RZ 8 (CERM)</b>	<b>7.20</b>	<b>35.16</b>	<b>42.36</b>		
14	Sion			34.25	34.25	0:43	13:12
<b>SS 14</b>	<b>Sion Casernes 2</b>	<b>Les Casernes 2</b>	<b>7.20</b>				<b>13:15</b>
14A	Sion / fin super ES			0.13	7.33	0:10	13:25
	Km to next refuel	<b>RZ 9 (AGIP Sion)</b>	<b>50.07</b>	<b>74.62</b>	<b>124.69</b>		
15	Chalais			16.15	16.15	0:25	13:50
<b>SS 15</b>	<b>Chalais-Mase 2</b>	<b>Vercorin 2</b>	<b>27.87</b>				<b>13:53</b>
16	Ayer			18.13	46.00	1:00	14:53
<b>SS 16</b>	<b>Ayer-Veysonnaz 2</b>	<b>Veysonnaz 2</b>	<b>9.90</b>				<b>14:56</b>
17	Veysonnaz			2.01	11.91	0:20	15:16
<b>SS 17</b>	<b>Veysonnaz-Nendaz 2</b>	<b>Nendaz 2</b>	<b>12.30</b>				<b>15:19</b>
17A	Service I In			39.11	51.41	1:06	16:25
Service I (CERM)			<b>50.07</b>	<b>109.78</b>	<b>167.05</b>	0:20	
18	Service I Exit / Finish Rally						16:45

<b>Jour 3 / Day 3: section 4 + 5 totals</b>	<b>7</b>	<b>107.34</b>	<b>216.30</b>	<b>323.64</b>
---	----------	---------------	---------------	---------------

<b>Jour 1 / Day 1 : totals</b>	<b>3</b>	<b>31.03</b>	<b>120.74</b>	<b>151.77</b>
<b>Jour 2 / Day 2 : totals</b>	<b>7</b>	<b>127.88</b>	<b>168.09</b>	<b>295.97</b>
<b>Jour 3 / Day 3 : totals</b>	<b>7</b>	<b>107.34</b>	<b>216.30</b>	<b>323.64</b>
<b>OVERALL TOTALS</b>	<b>17</b>	<b>266.25</b>	<b>505.13</b>	<b>771.38</b>

New Rally. New Generation.